




# SUITE 1500 FOR LEASE

ONE LOMBARD PLACE

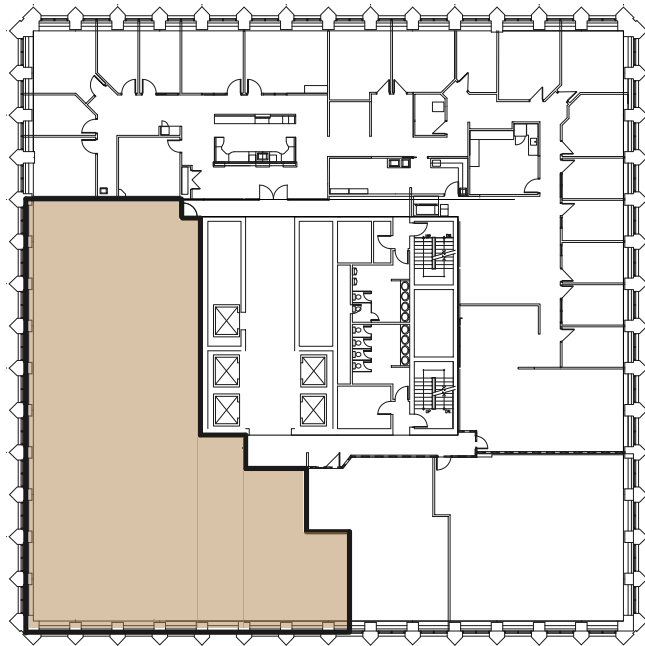
Proudly managed by  
BentallGreenOak 

# SUITE 1500

One Lombard Place  
Winnipeg, MB

## SPECIFICATIONS

---



Suite #	1500
Available Area	5,916 sf (+-)
Net Rent:	Market
Op Costs:	\$22.54 psf per annum (2023 estimate)
Term:	To be negotiated
Possession:	Immediately
Highlights:	Shell Condition with lobby exposure
Parking:	Underground heated, scramble and surface lots
Year Built:	1969
Management:	On-site office BentallGreenOak (Canada) Limited Partnership