




SUITE 1400 FOR LEASE

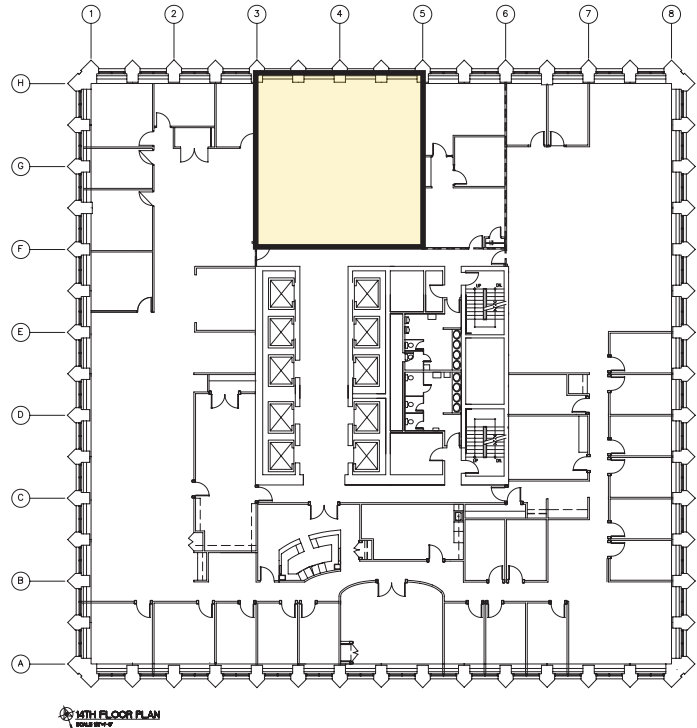
ONE LOMBARD PLACE

Proudly managed by
BentallGreenOak 

SUITE 1400

One Lombard Place
Winnipeg, MB

SPECIFICATIONS



Suite #	1400
Available Area	1,750 sf (+-)
Net Rent:	Market
Op Costs:	\$22.54 psf per annum (2023 estimate)
Term:	5 to 10 years
Possession:	Immediately
Highlights:	Direct Lobby exposure. Shell Condition
Parking:	Underground heated, scramble and surface lots
Year Built:	1969
Management:	On-site office BentallGreenOak (Canada) Limited Partnership