



# TWIN ATRIA BUILDING



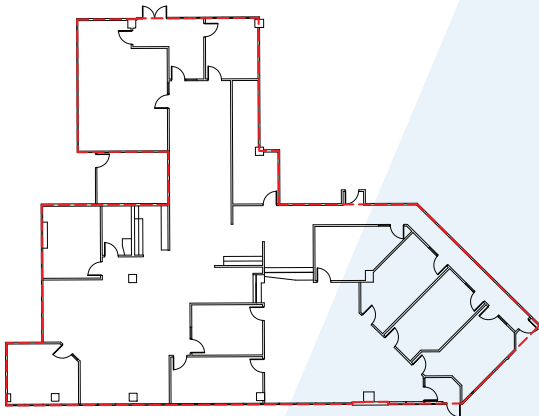
SUITE 100  
4999 - 98 AVENUE NW, EDMONTON, AB

# Suite 100

## 6,626sf

- Class A - contemporary office complex
- Ground floor suite with windows and street level entrance
- BOMA Gold certified
- Fitwel 1 star certified
- Energy Star High Efficiency certified
- Within walking distance of major amenities including restaurants, shopping malls, post office, pharmacy, fitness centre, gas station, grocery stores, banks and Edmonton Transit Centre.

SUITE 100



### Quick Facts

AREA	6,626 SF
DESCRIPTION	6 private offices, street level entrance, meeting room, in-suite washroom, kitchen and reception area. Suites 100, 102, 107 and 108 can be combined for a contiguous space of 21,038 sf.
PARKING	1 stall per / 350 sf ratio
NET RENT	Market
ADDITIONAL RENT	\$11.65 psf Operating costs, est. 2026
TERM	5 Years
AVAILABLE	Immediately
AMENITIES	- Bus Stop located at corner of complex for bus routes: 001, 633, 635 - 10 minute drive to downtown - Located near Anthony Henday Drive which connects drivers to all major Edmonton corridors.

**TWIN  
ATRIA  
BUILDING**

Brad Alton, Vice President, Leasing  
brad.alton@bgo.com  
780-990-7009

BentallGreenOak (Canada) LP  
Suite 100, 4803 - 87th Street NW  
Edmonton, AB T6E 0V3  
bgo.com

