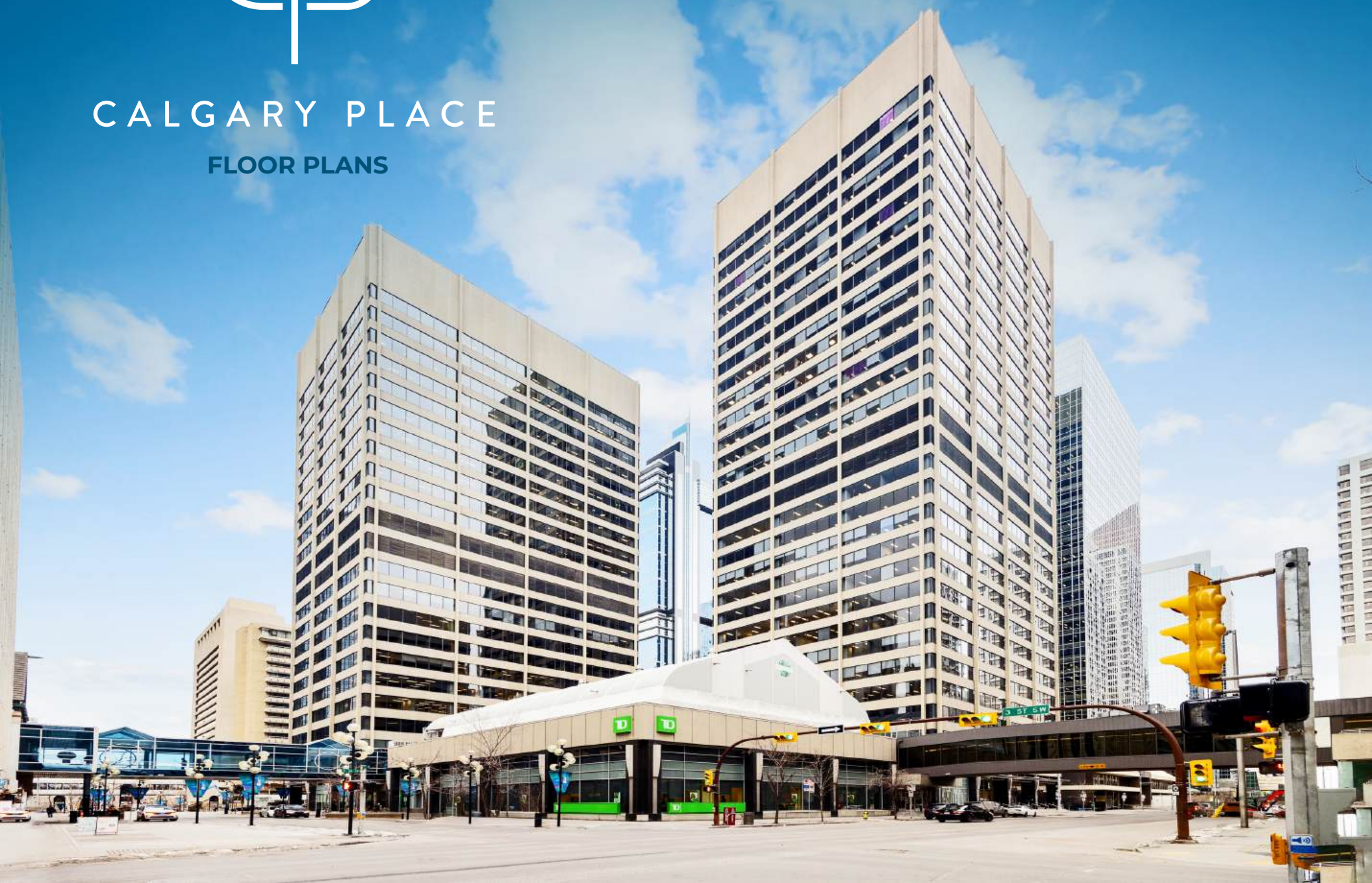




# CALGARY PLACE

## FLOOR PLANS



## Floor Plans. **Calgary Place I.**

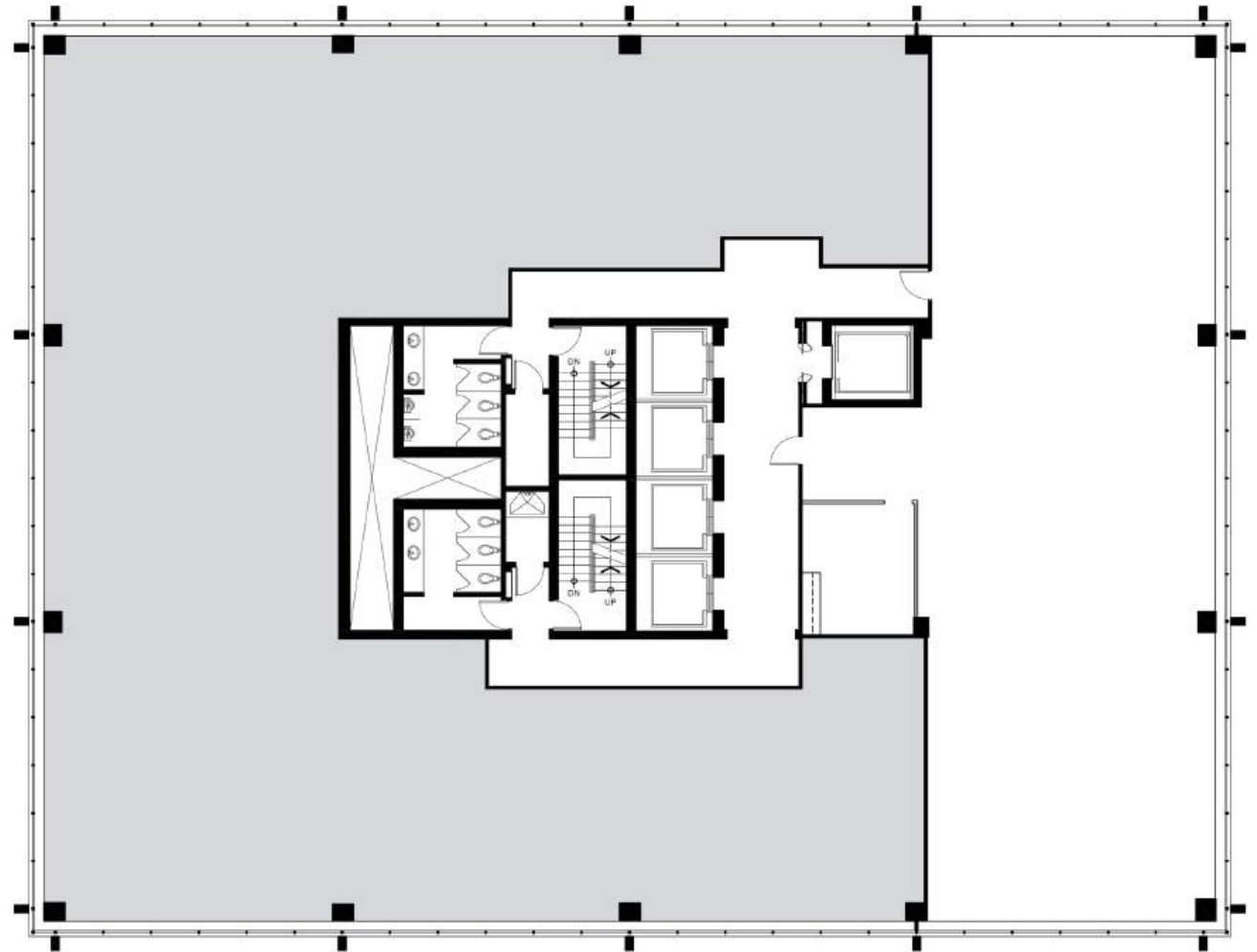


CALGARY PLACE

Suite 2900 4,269 SF

**Available Immediately**

- Interior office
- Open area for workstations



## Floor Plans. **Calgary Place I.**

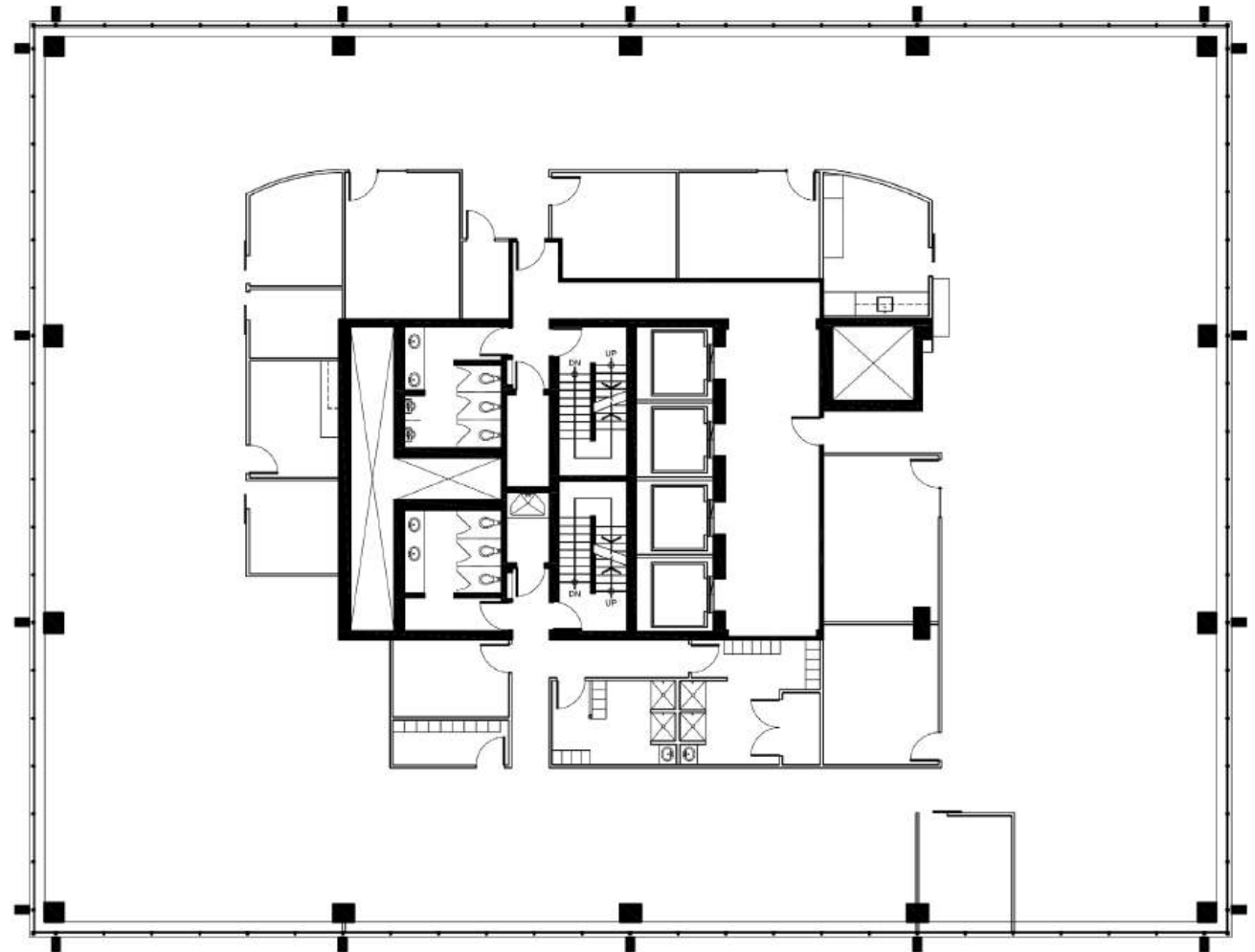


CALGARY PLACE

Suite 2800 12,822 SF

**Available Immediately**

- Exterior office
- 3 interior offices
- Open area for ~56 workstations
- 5 meeting rooms
- Kitchen
- Copy/print rooms
- Internal showers





## Floor Plans. **Calgary Place I.**



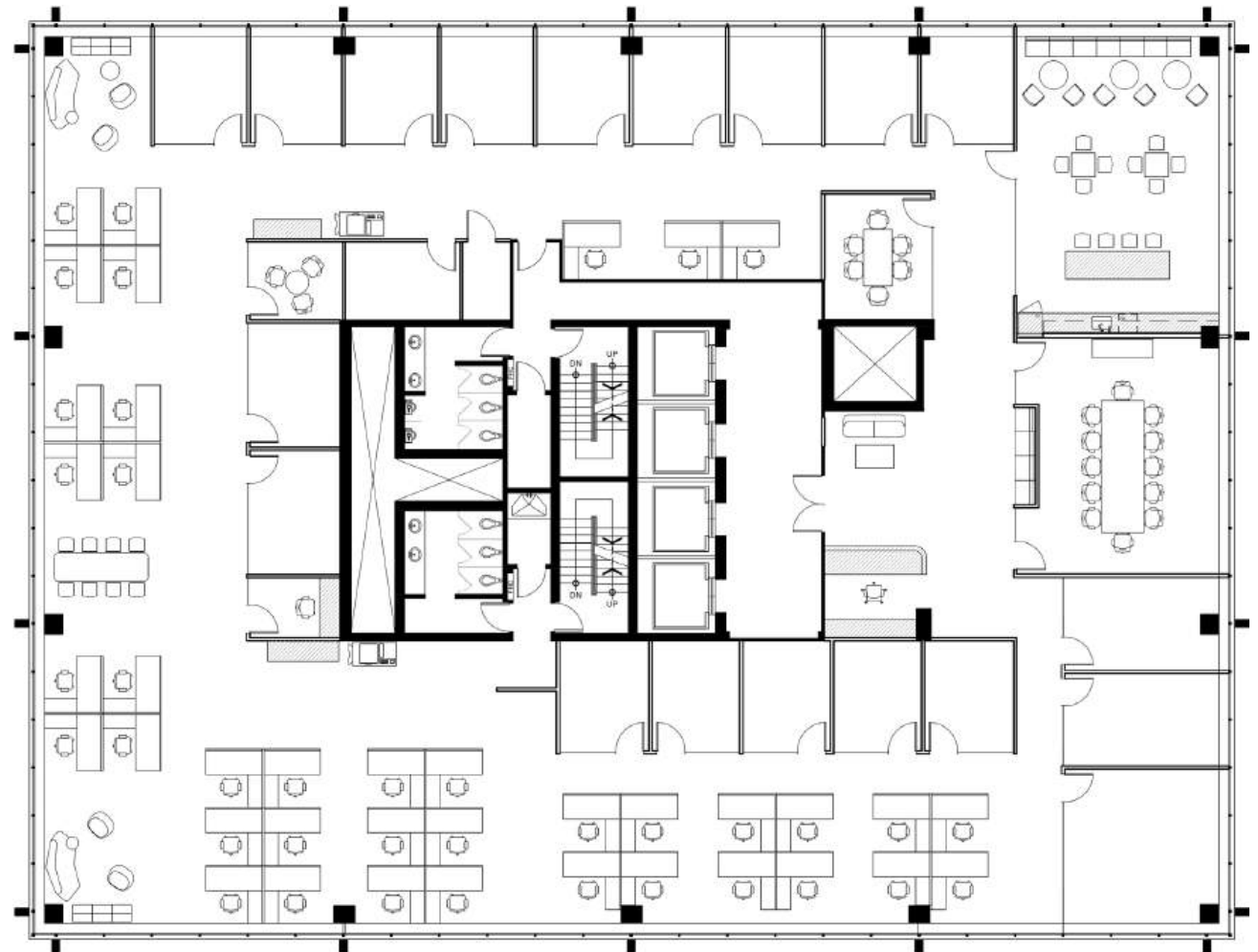
CALGARY PLACE

Suite 2800 12,822 SF

**Available Immediately**

### **Conceptual Layout**

- 12 exterior offices
- 7 interior offices
- 39 workstations
- Boardroom
- Meeting room
- Breakout room
- Kitchen
- Copy/print areas
- Phone room
- Server room
- 3 collaboration areas



## Floor Plans. **Calgary Place I.**

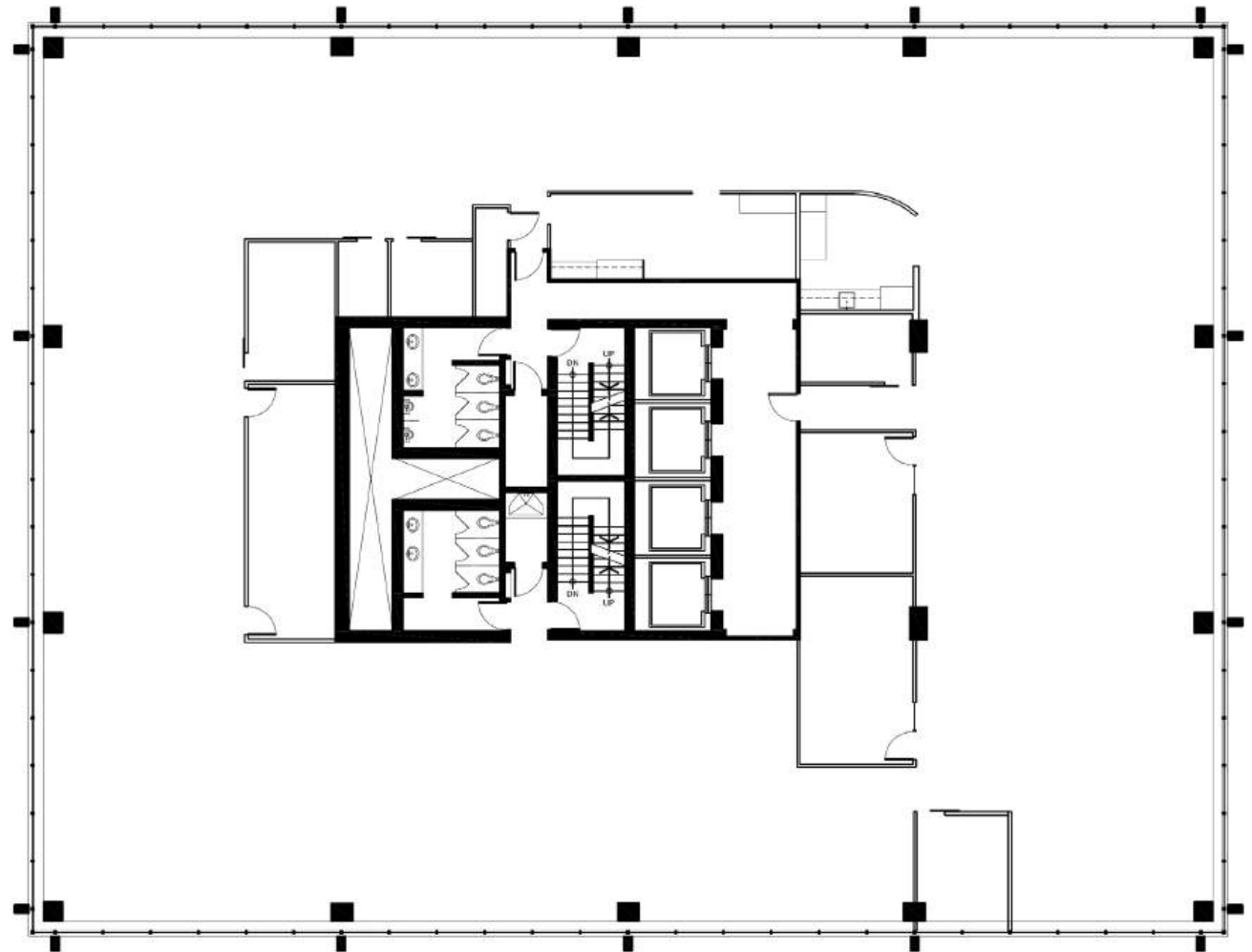


CALGARY PLACE

Suite 2700 12,927 SF

**Available Immediately**

- Exterior office
- Open area for ~66 workstations
- 4 meeting rooms
- Kitchen
- Copy/print room
- Server room



## Floor Plans. **Calgary Place I.**



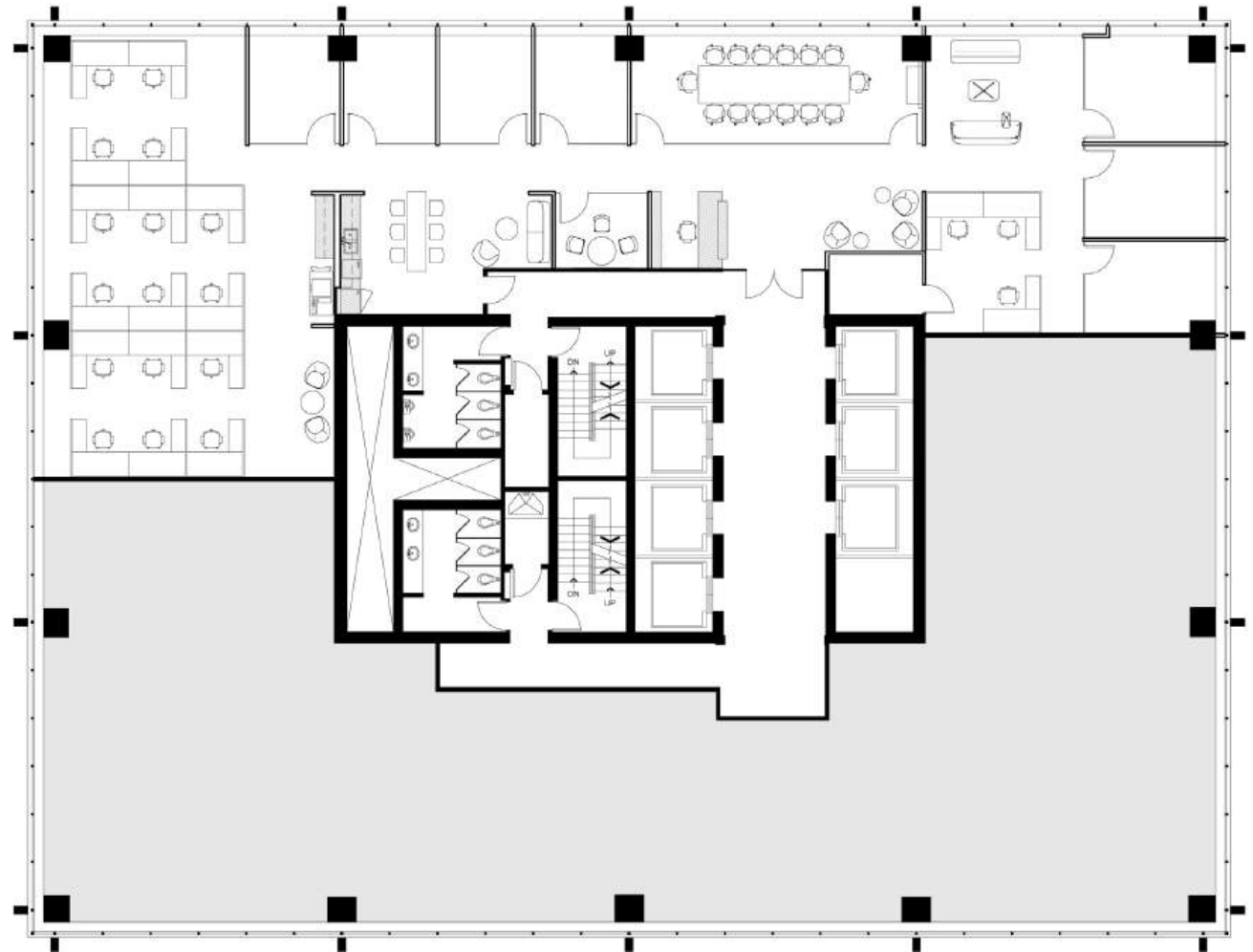
CALGARY PLACE

Suite 1450 5,354 SF

### **Proposed Show Suite**

**Available Q1 2026**

- 7 exterior offices
- Open area for 19 workstations
- Boardroom
- Break out room
- Kitchen/lounge
- Copy/print area
- Reception
- Server room



## Floor Plans. **Calgary Place I.**



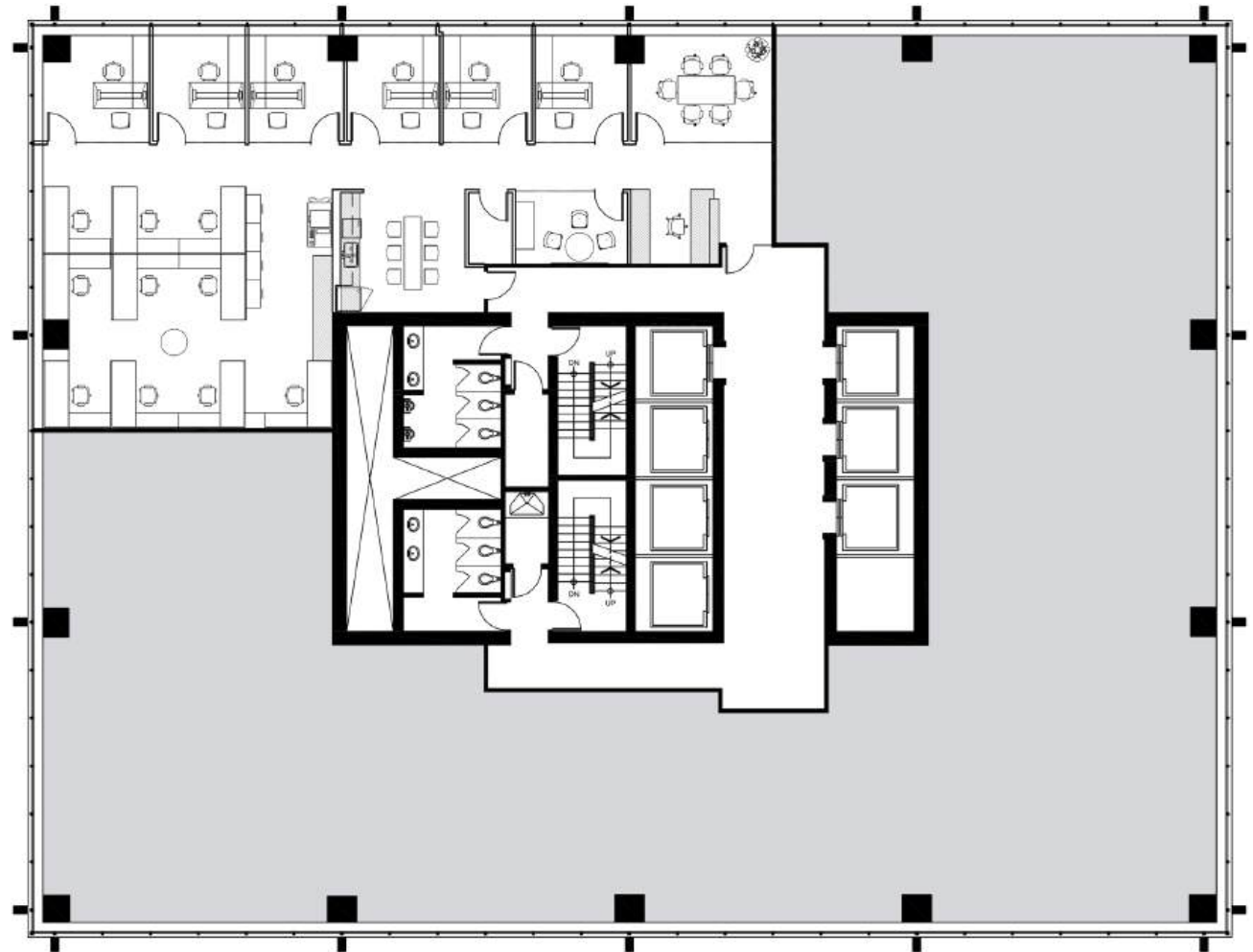
CALGARY PLACE

Suite 1030 3,240 SF

**Available immediately**

### Show Suite

- 6 exterior offices
- Open area for 10 workstations
- Meeting room
- Breakout room
- Café
- Copy/print area
- Reception



## Floor Plans. **Calgary Place I.**

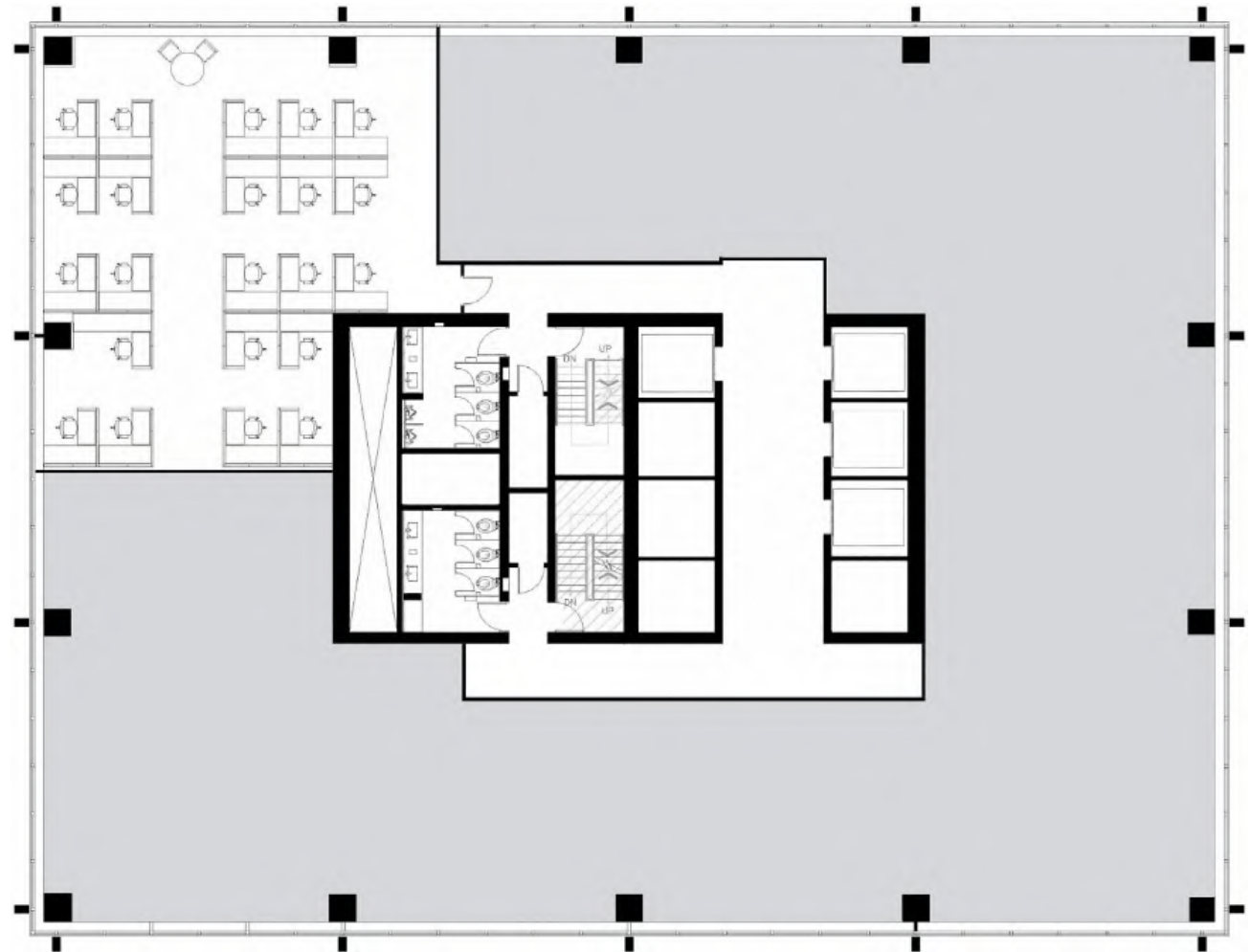


CALGARY PLACE

Suite 900 2,326 SF

**Available immediately**

- Open area for 22 workstations





## Floor Plans. **Calgary Place I.**

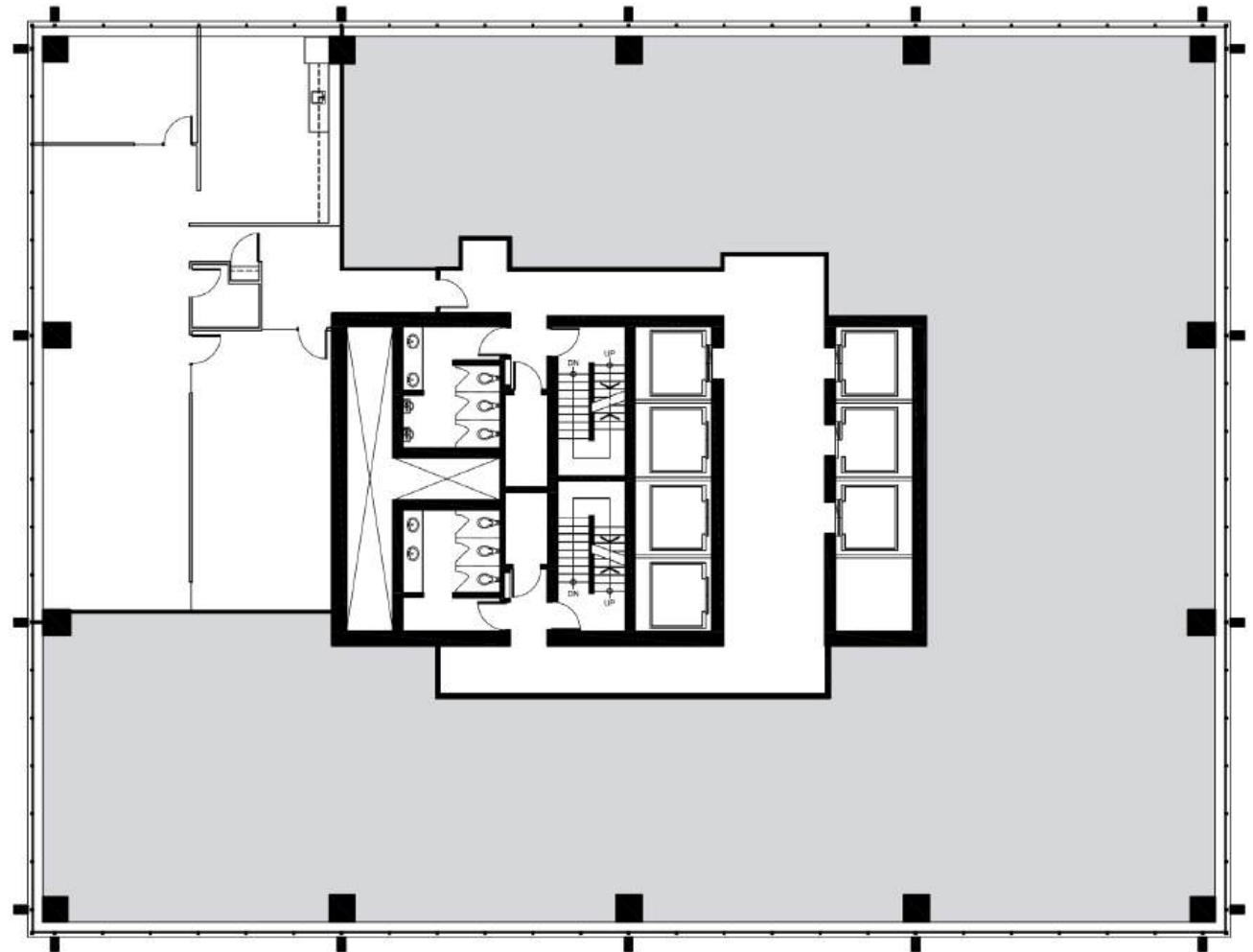


CALGARY PLACE

Suite 830 2,544 SF

**Available immediately**

- Exterior office
- Open area for workstations
- Boardroom
- Kitchen
- Small reception
- Server room



## Floor Plans. **Calgary Place I.**



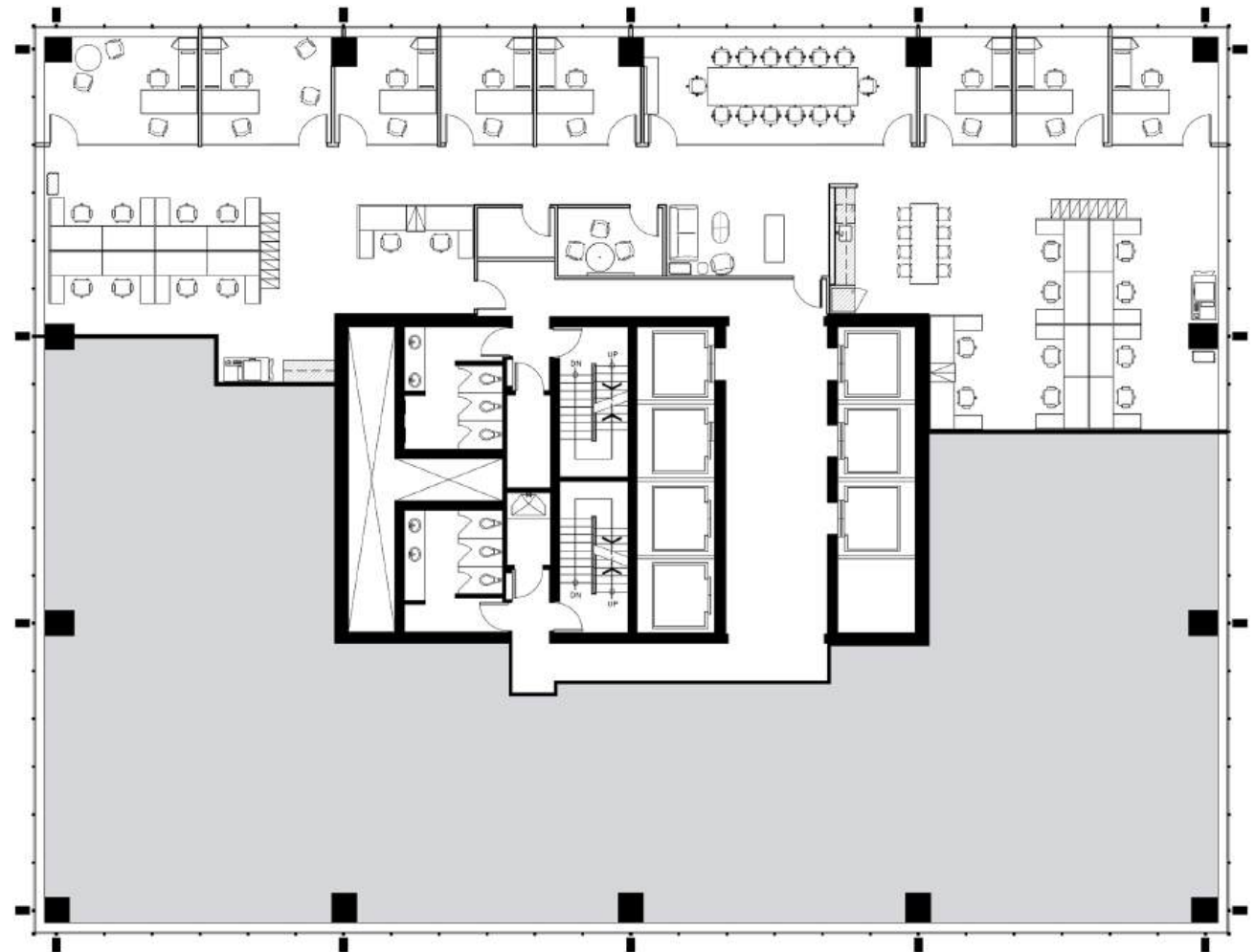
CALGARY PLACE

Suite 710 5,238 SF

**Available immediately**

### Show Suite

- 8 exterior offices
- Open area for 20 workstations
- Boardroom
- Café
- 2 copy/print areas
- Reception
- Server room



**CLICK FOR  
VIRTUAL TOUR** 

# Show Suite. **Calgary Place I.**



CALGARY PLACE

Suite 710



## Floor Plans. **Calgary Place I.**



CALGARY PLACE

Suite 640 3,463 SF

**Available immediately**

- 6 exterior offices
- 2 interior offices
- 2 meeting rooms
- Kitchen
- Copy/print area
- Reception
- Server room
- Furnished



## Floor Plans. **Calgary Place II.**

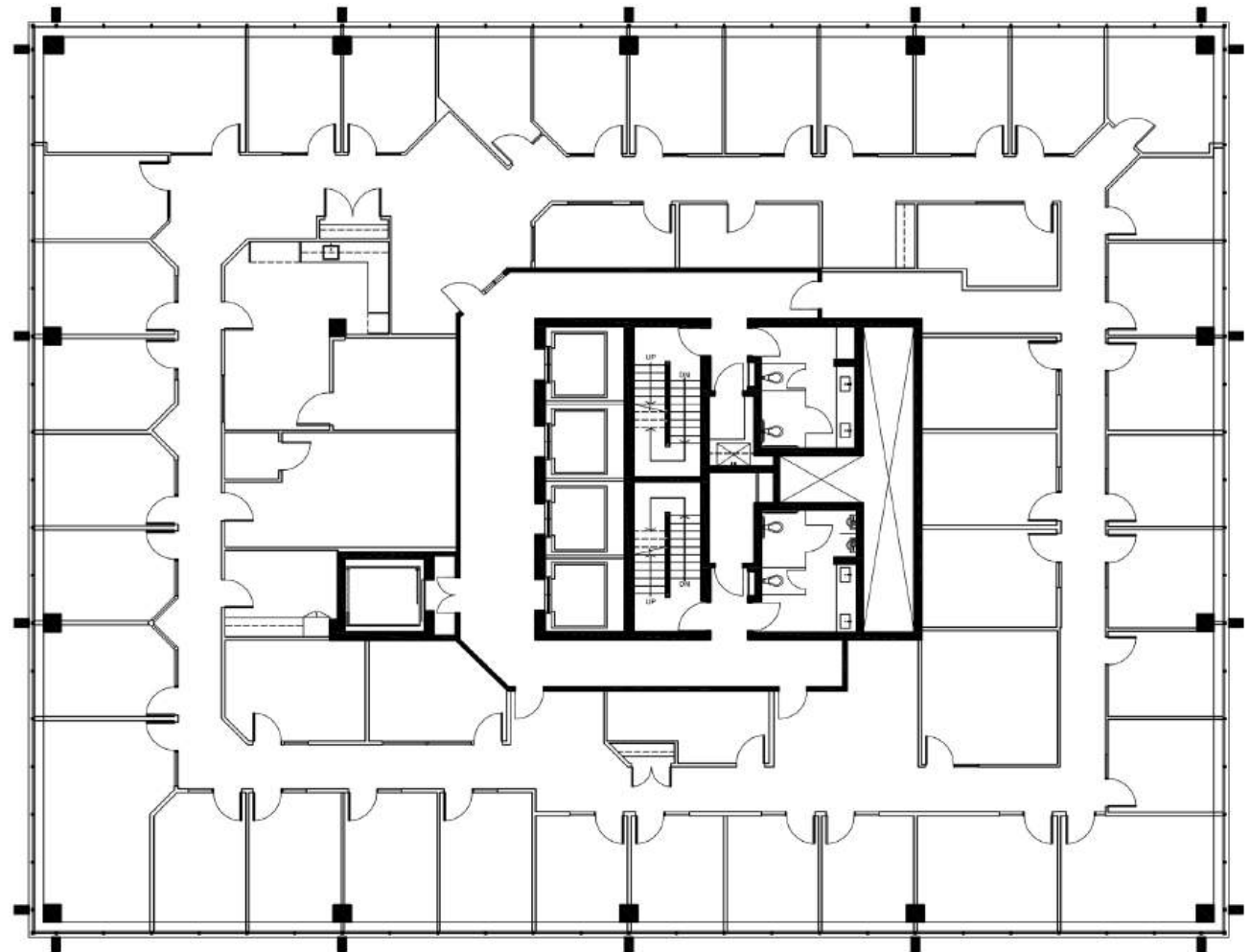


CALGARY PLACE

Suite 2300 12,327 SF

**Available December 1, 2025**

- 33 exterior offices
- 5 interior offices
- 4 meeting rooms
- Kitchen/lounge
- 5 copy/print/storage rooms
- Small reception
- Server room





## Floor Plans. **Calgary Place II.**

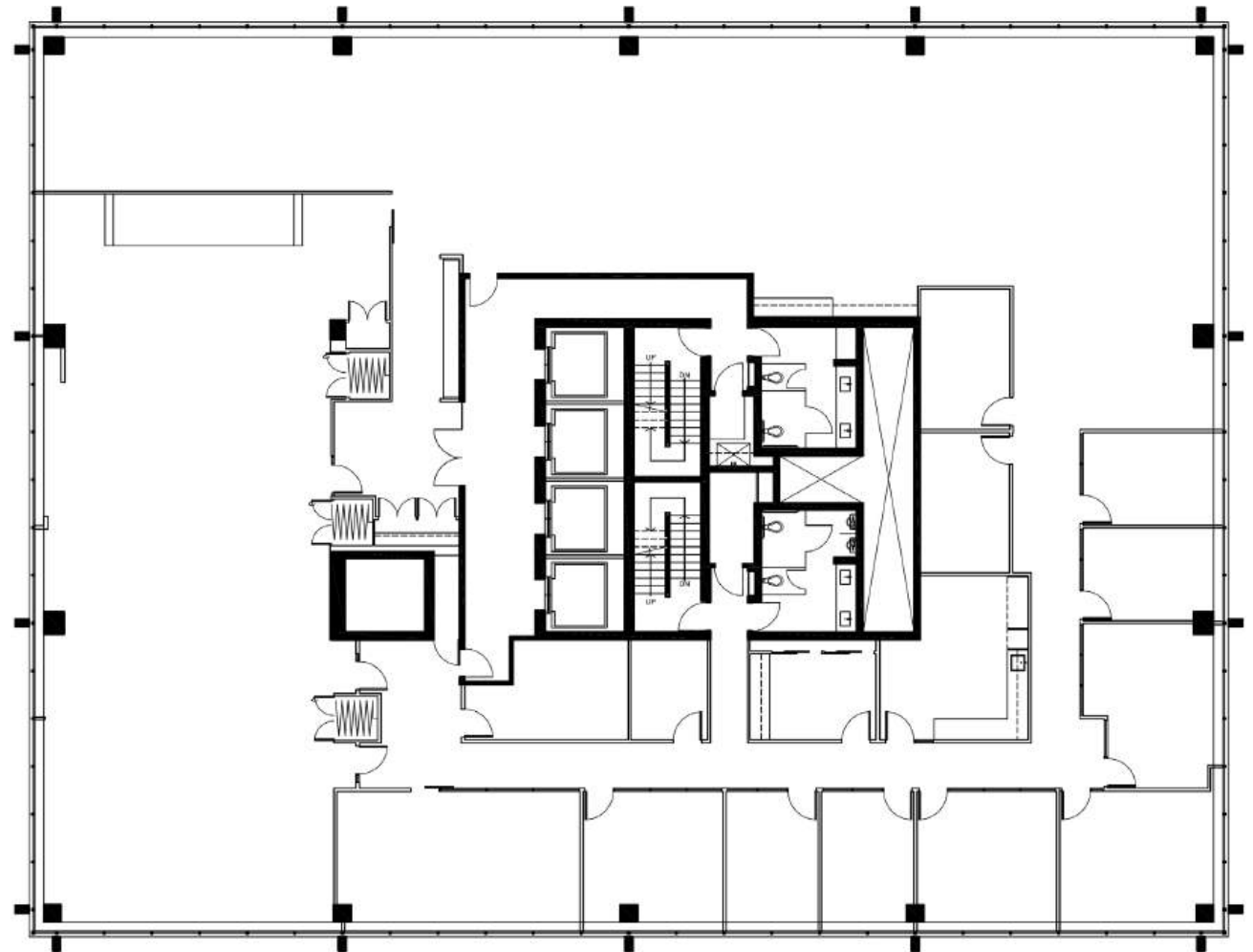


CALGARY PLACE

Suite 2200 12,844 SF

**Available December 1, 2025**

- 8 exterior offices
- 3 interior offices
- Open area for workstations
- Boardroom
- Kitchen
- Large training room



## Floor Plans. **Calgary Place II.**

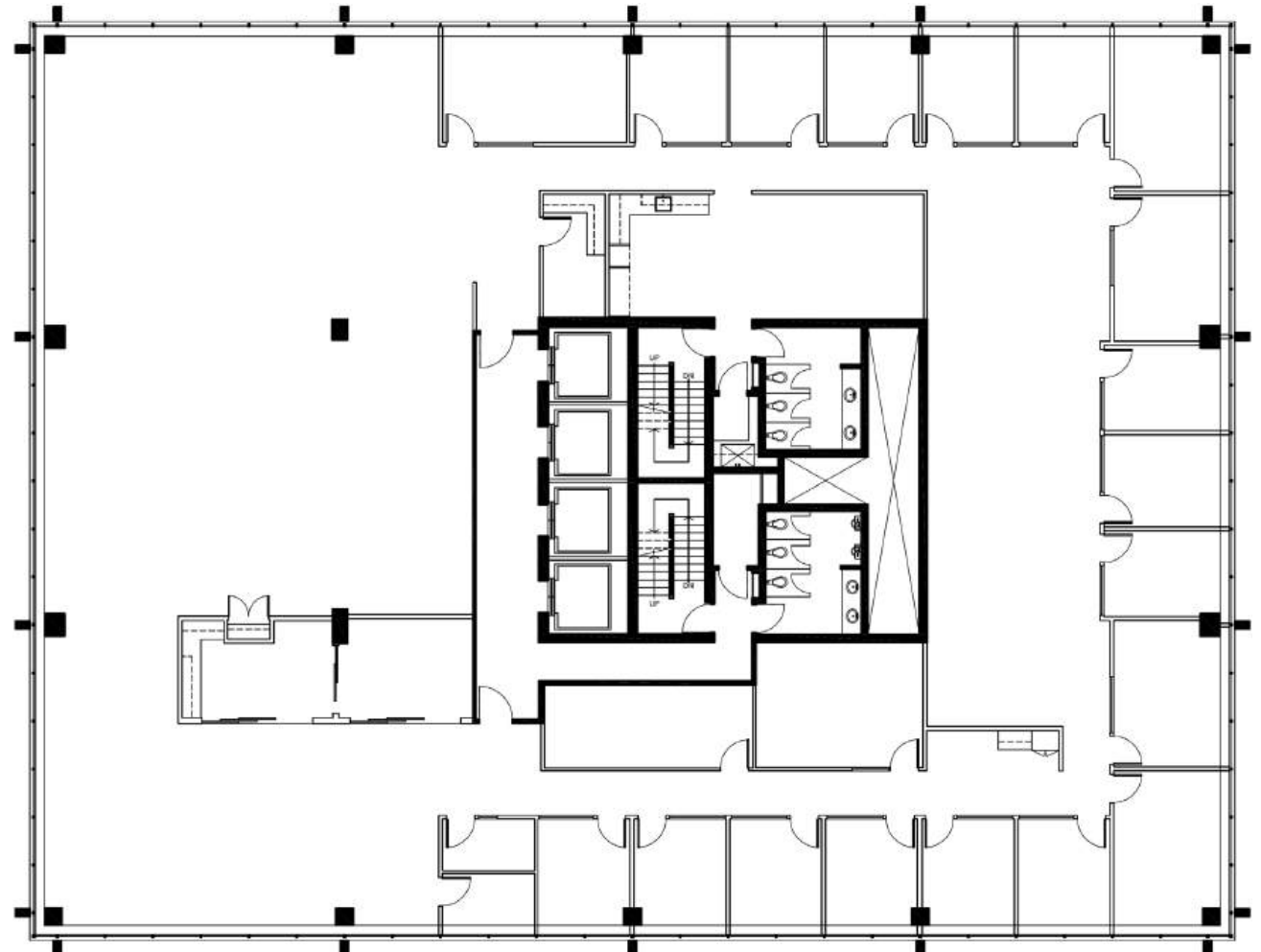


CALGARY PLACE

Suite 2100 12,948 SF

**Available December 1, 2025**

- 18 exterior offices
- Open area for workstations
- 3 meeting rooms
- Kitchen/lounge
- 3 copy/print rooms



## Floor Plans. **Calgary Place II.**

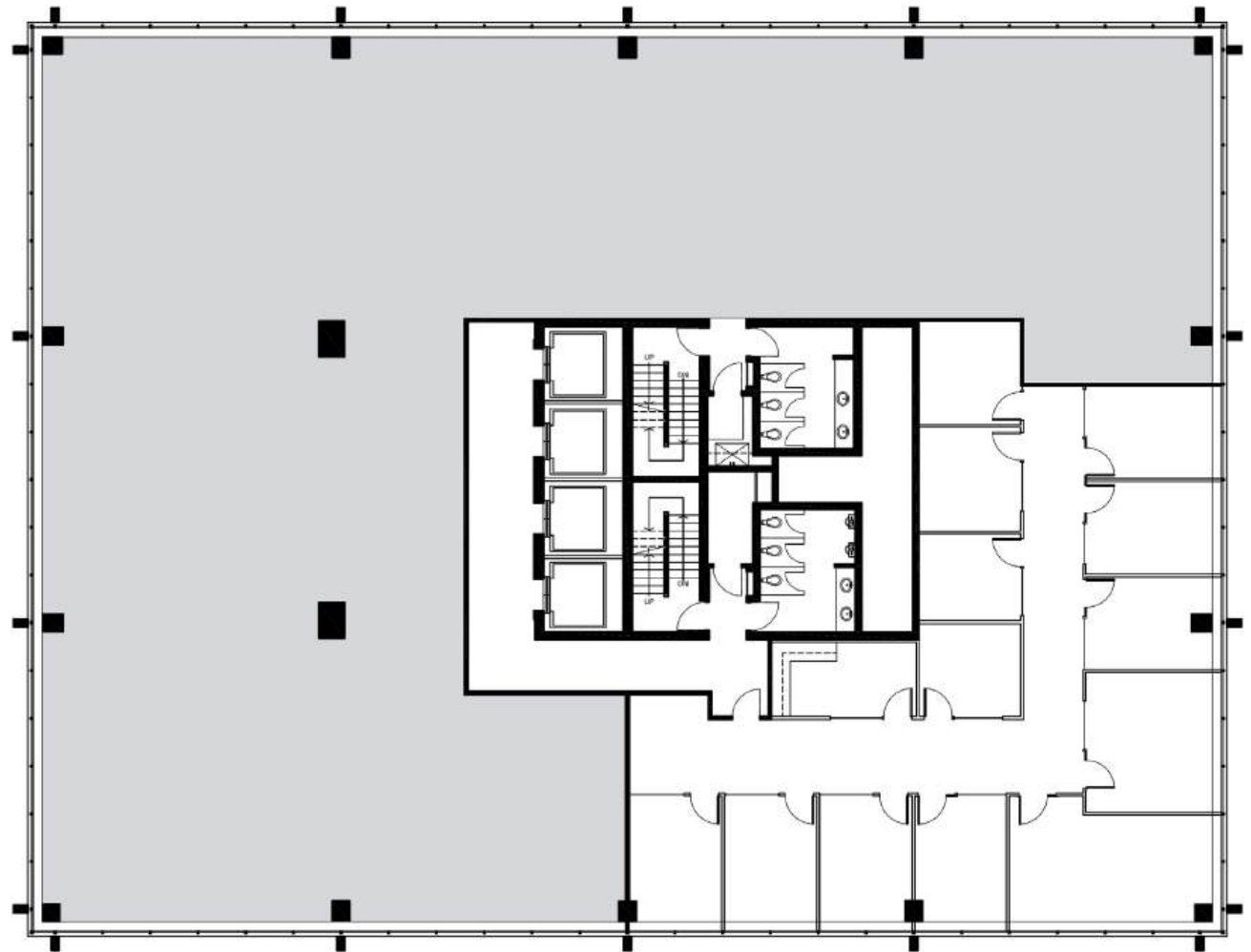


CALGARY PLACE

Suite 1900 4,460 SF

**Available December 1, 2025**

- 8 exterior offices
- 4 interior offices
- 1 meeting room
- 1 copy/print room



## Floor Plans. **Calgary Place II.**

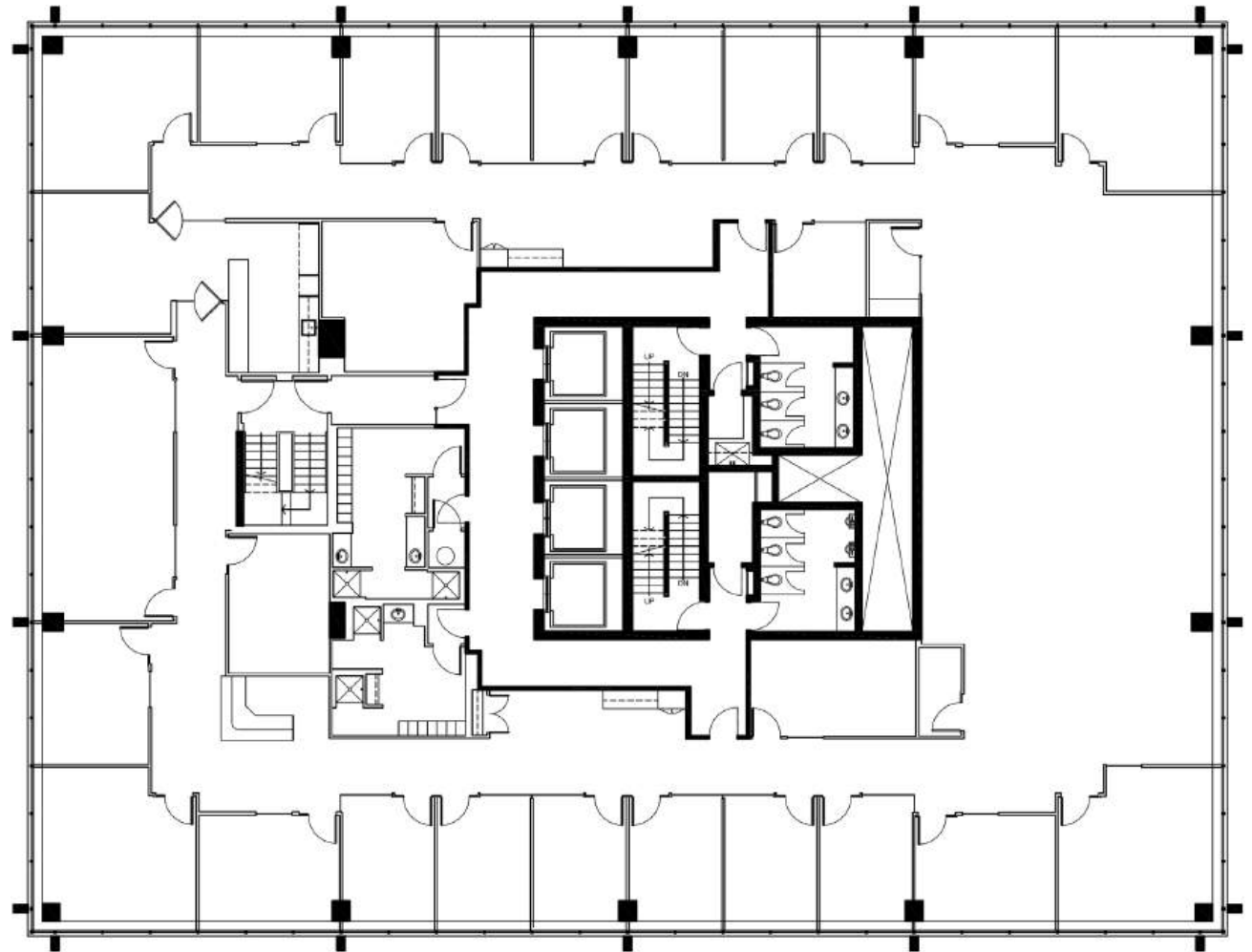


CALGARY PLACE

Suite 1800 12,606 SF

**Available December 1, 2025**

- 21 exterior offices
- Open area for workstations
- Boardroom
- 4 meeting rooms
- Kitchen/lounge area
- 3 copy/print areas
- Internal showers
- Server room
- Interconnecting stairwells to floors 17 and 19



## Floor Plans. **Calgary Place II.**

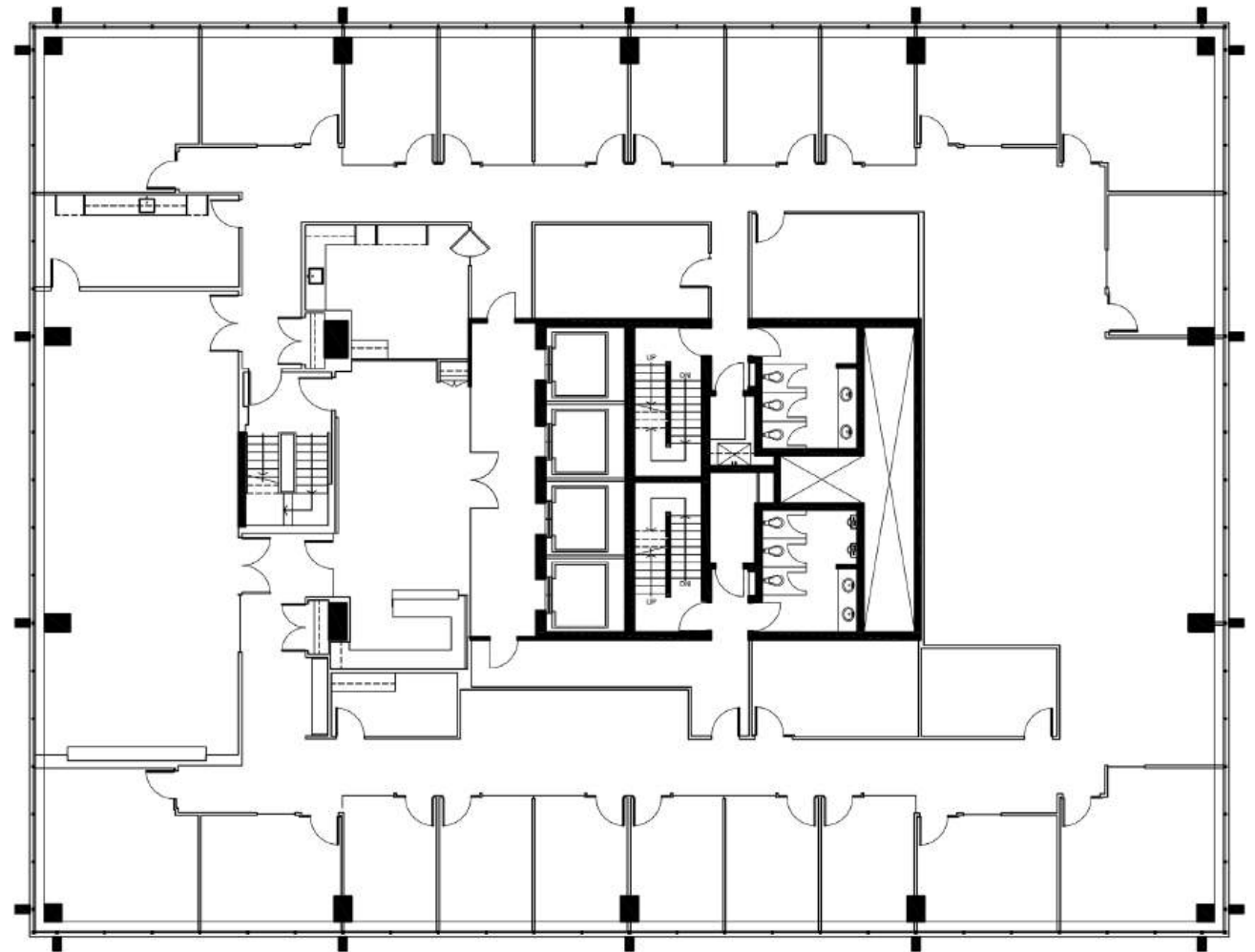


CALGARY PLACE

Suite 1700 12,960 SF

**Available December 1, 2025**

- 21 exterior offices
- Open area for 22 workstations
- 3 meeting rooms
- 2 kitchens
- Copy/print room
- Large reception
- Large training room
- Server room
- Interconnecting stairwells to floors 16 and 18





## Floor Plans. **Calgary Place II.**



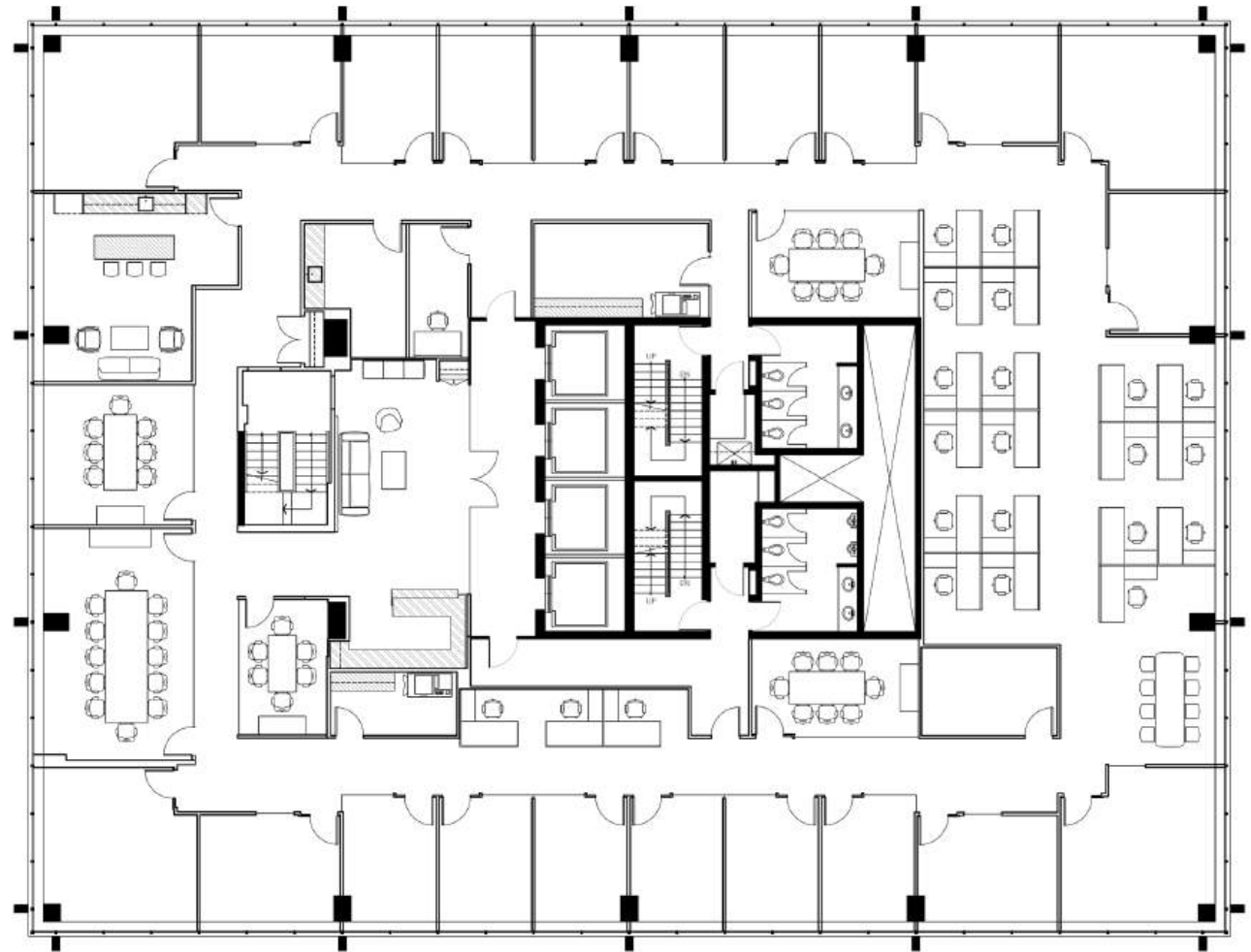
CALGARY PLACE

Suite 1700 12,960 SF

**Available December 1, 2025**

### **Conceptual Layout**

- 21 exterior offices
- 22 workstations
- Boardroom
- 4 meeting rooms
- Kitchen
- 2 copy/print/storage rooms
- Large reception
- Server room
- Phone room
- Wellness room
- Collaboration area
- Interconnecting stairwells to floors 16 and 18



## Floor Plans. **Calgary Place II.**

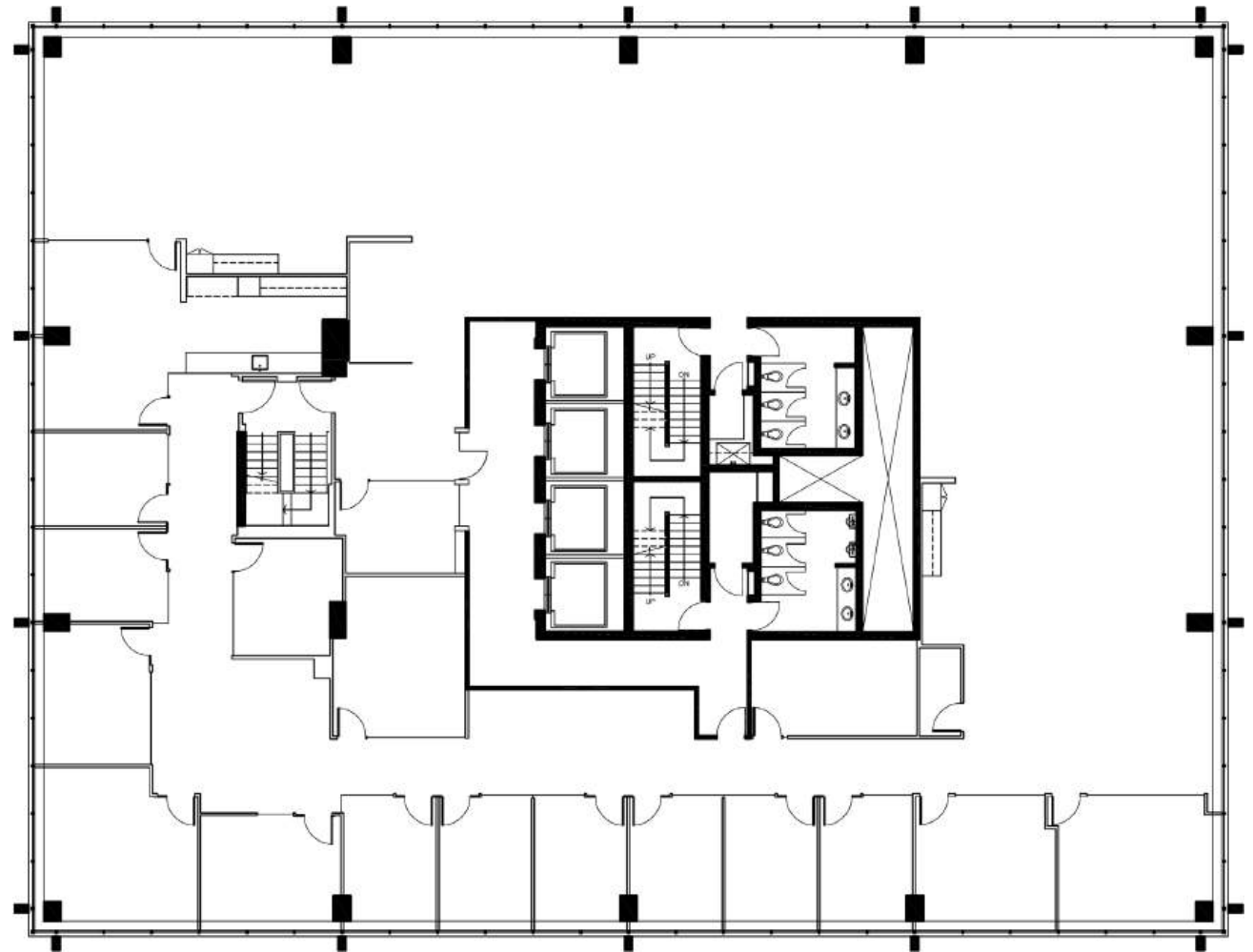


CALGARY PLACE

Suite 1600 12,958 SF

**Available December 1, 2025**

- 13 exterior offices
- Open area for workstations
- 4 meeting rooms
- Kitchen/lounge area
- 2 copy/print areas
- Server room
- Interconnecting stairwells to floors 15 and 17



## Floor Plans. **Calgary Place II.**

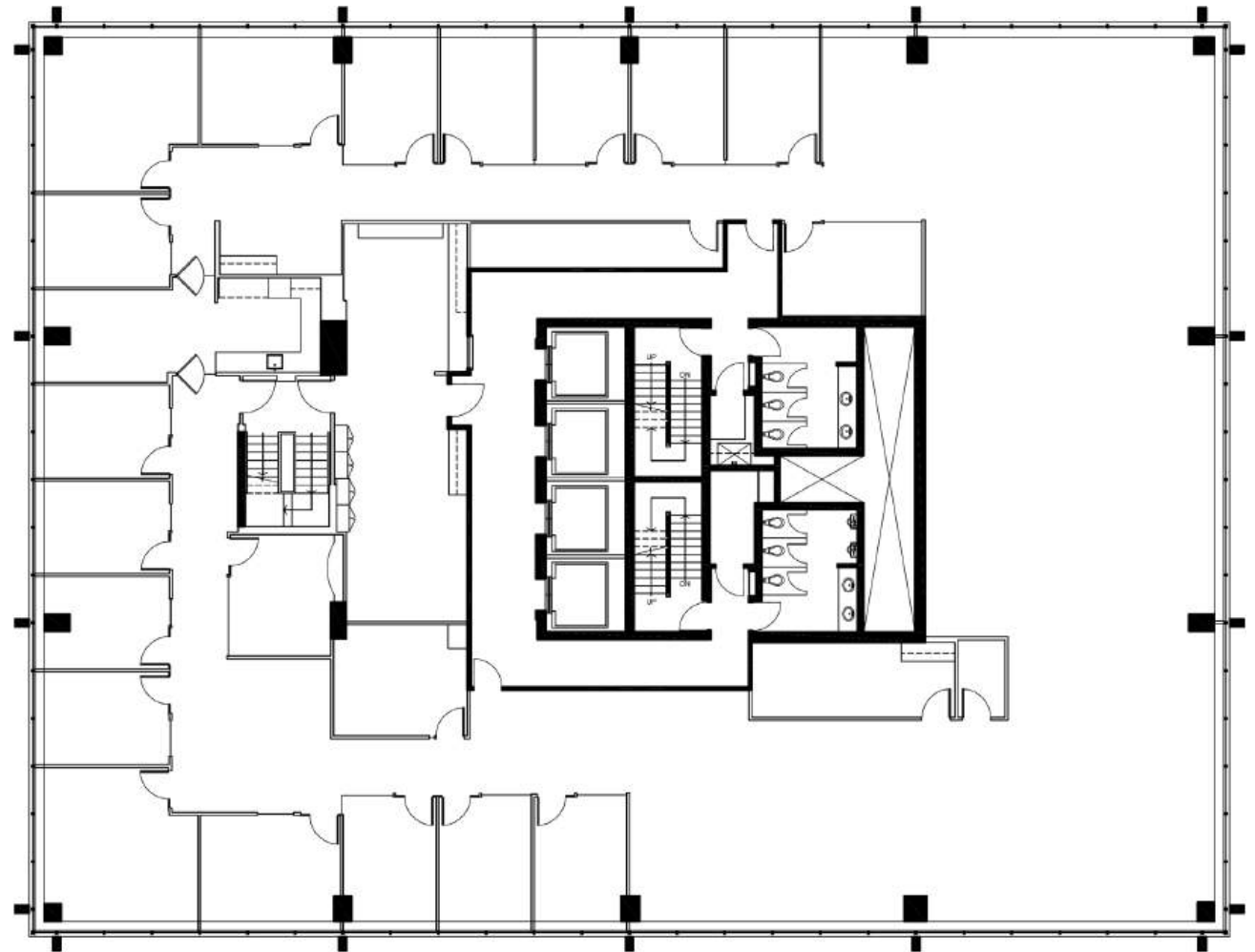


CALGARY PLACE

Suite 1500 12,572 SF

**Available December 1, 2025**

- 17 exterior offices
- Open area for workstations
- 3 meeting rooms
- Kitchen/lounge area
- 2 copy/print rooms
- Large reception
- Interconnecting stairwells to floors 14 and 16



## Floor Plans. **Calgary Place II.**

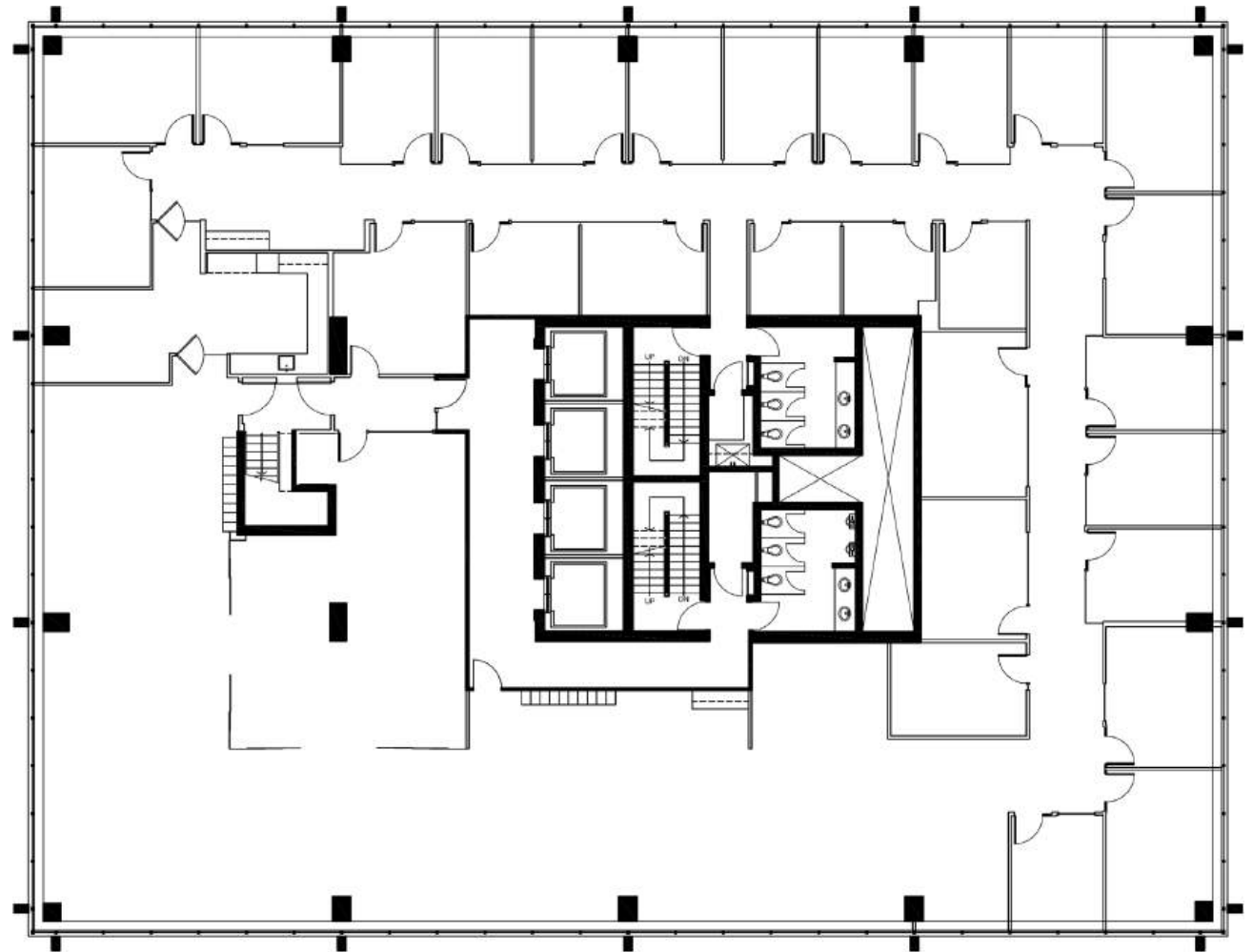


CALGARY PLACE

Suite 1400 12,945 SF

**Available December 1, 2025**

- 19 exterior offices
- 8 interior offices
- Open area for workstations
- Large boardroom
- Meeting room
- Kitchen/lounge area
- 2 copy/print areas
- Interconnecting stairwell to floor 15



# Floor Plans. **Calgary Place II.**



CALGARY PLACE

7th Floor 11,648 SF

**Available immediately**

## Show Suites

### **Suite 750 3,430 SF**

- 3 exterior offices
- Open area for 10 workstations
- Boardroom
- Break out room
- Phone room
- Café
- Copy/print area
- Reception
- Server/storage room

### **Suite 730 4,595 SF**

- 5 exterior offices
- 2 interior offices
- Open area for 13 workstations
- Boardroom
- Café
- Copy/print area
- Server/storage room

### **Suite 710 3,623 SF**

- 6 exterior offices
- Open area for 9 workstations
- Boardroom
- Break out room
- Phone room
- Café
- Copy/print area
- Reception
- Server room



**VIRTUAL TOUR  
SUITE 750**

**VIRTUAL TOUR  
SUITE 730**

**VIRTUAL TOUR  
SUITE 710**



# Show Suite. **Calgary Place II.**



CALGARY PLACE

Suite 750

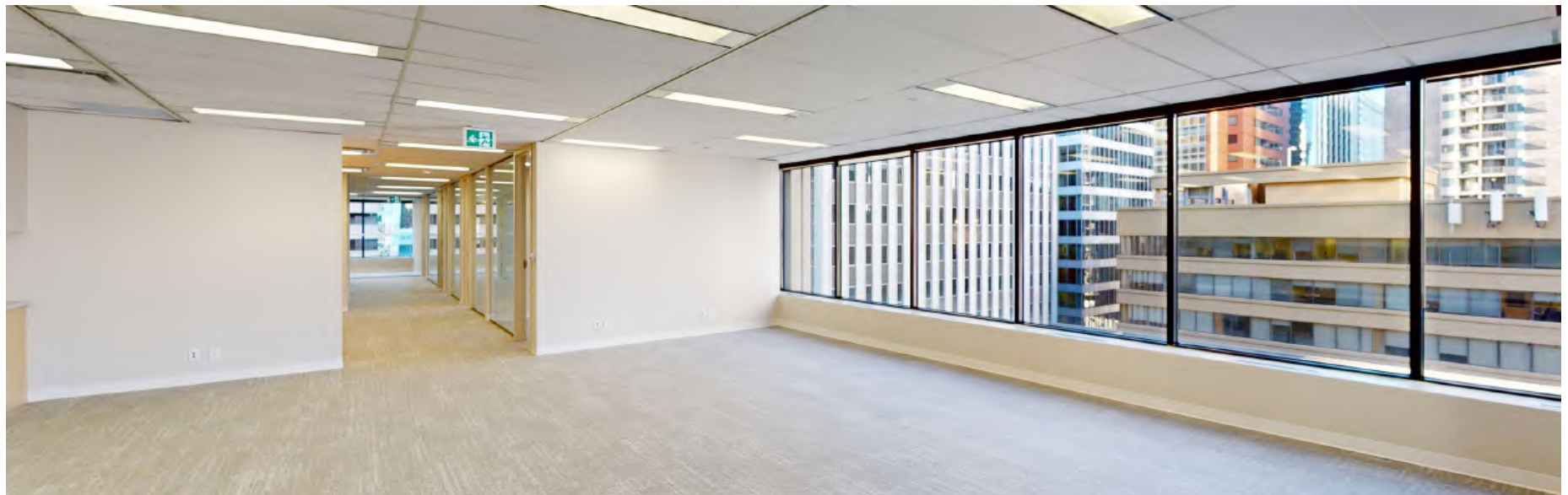


# Show Suite. **Calgary Place II.**



CALGARY PLACE

Suite 730





## Show Suite. **Calgary Place II.**



CALGARY PLACE

Suite 710



## Floor Plans. **Calgary Place II.**



CALGARY PLACE

5th Floor 4,659 SF

**Available Q1 2026**

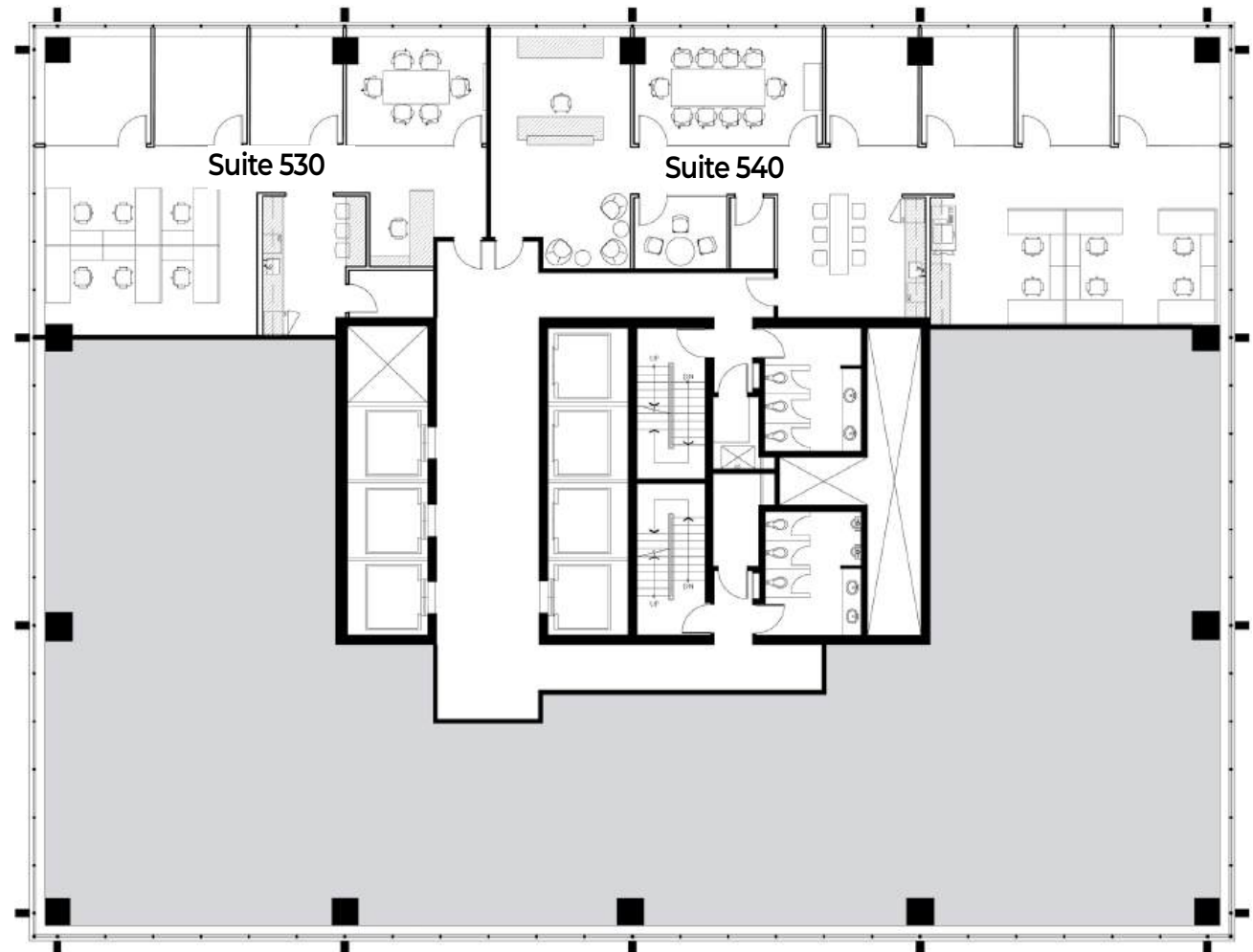
### Proposed Show Suites

#### **Suite 540 2,808 SF**

- 4 exterior offices
- Open area for 6 workstations
- Boardroom
- Breakout room
- Café
- Copy/print area
- Reception
- Server/storage room

#### **Suite 530 1,851 SF**

- 3 exterior offices
- Open area for 6 workstations
- Meeting room
- Kitchen
- Server/storage room



## Floor Plans. **Calgary Place II.**



CALGARY PLACE

Suite 400 12,500 SF

**Available immediately**

- 17 exterior offices
- 1 interior office
- Open area for ~58 workstations
- Boardroom
- Meeting room
- Kitchen
- 3 copy/file areas





## Floor Plans. **Calgary Place II.**

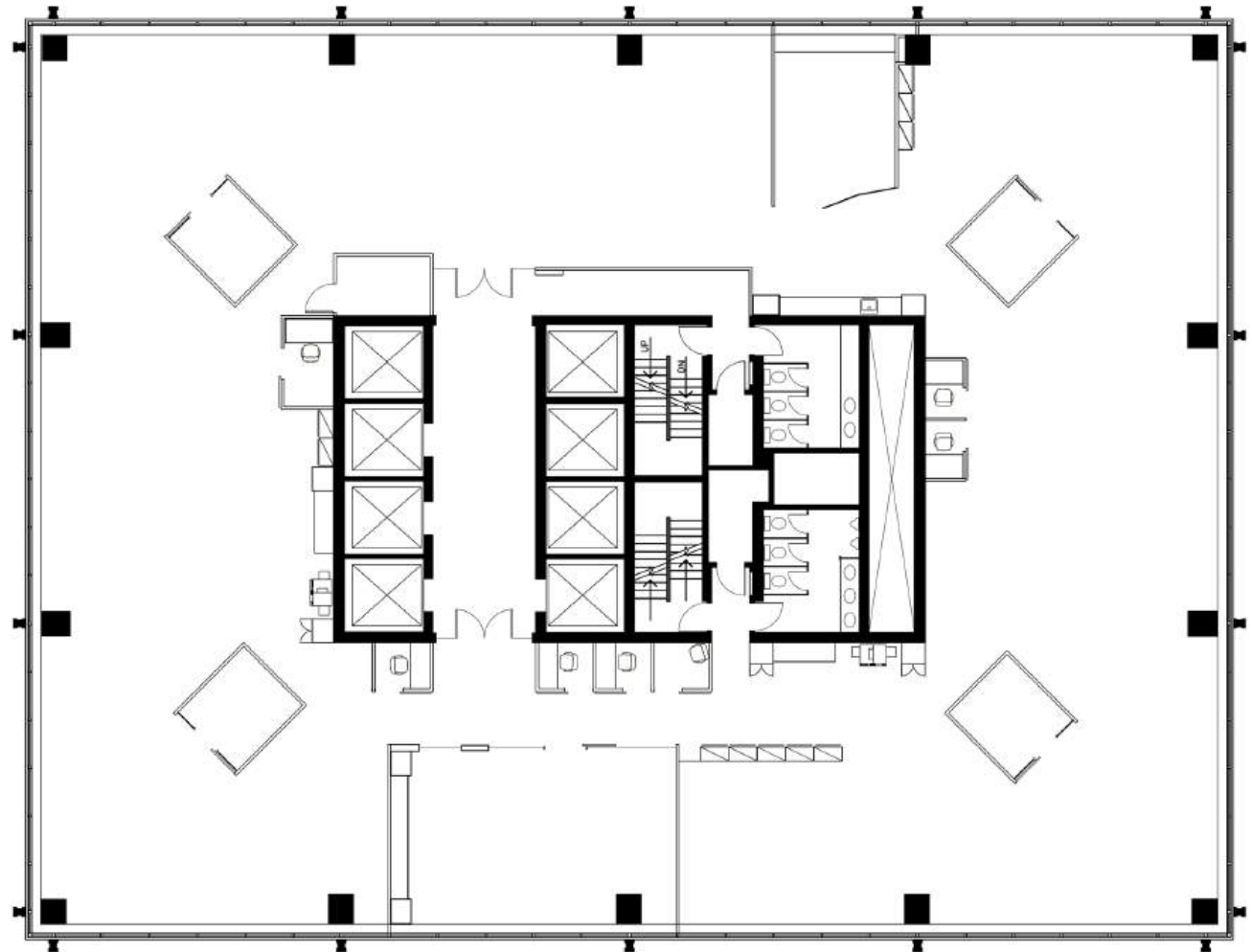


CALGARY PLACE

Suite 300 12,467 SF

**Available immediately**

- Open area for ~61 workstations
- Boardroom
- 4 meeting rooms
- Kitchen
- 2 copy/print areas
- 7 phone rooms





## CALGARY PLACE

**TREVOR DAVIES**

Senior Vice President  
+1 403 750 0542  
trevor.davies@cbre.com

**DARRELL BOLDON**

Associate Vice President  
+1 403 750 0531  
darrell.boldon@cbre.com

**CASEY ROLAND**

Transaction Manager  
+1 403 750 0544  
casey.roland@cbre.com

**CBRE LIMITED**

3200 525 8 Avenue SW  
Calgary, AB T2P 1G1  
www.cbre.ca



This disclaimer shall apply to CBRE Limited, Real Estate Brokerage, and to all other divisions of the Corporation; to include all employees and independent contractors ("CBRE"). The information set out herein, including, without limitation, any projections, images, opinions, assumptions and estimates obtained from third parties (the "Information") has not been verified by CBRE, and CBRE does not represent, warrant or guarantee the accuracy, correctness and completeness of the Information. CBRE does not accept or assume any responsibility or liability, direct or consequential, for the Information or the recipient's reliance upon the Information. The recipient of the Information should take such steps as the recipient may deem necessary to verify the Information prior to placing any reliance upon the Information. The Information may change and any property described in the Information may be withdrawn from the market at any time without notice or obligation to the recipient from CBRE. CBRE and the CBRE logo are the service marks of CBRE Limited and/or its affiliated or related companies in other countries. All other marks displayed on this document are the property of their respective owners. All Rights Reserved. Mapping Sources: Canadian Mapping Services [canadamapping@cbre.com](mailto:canadamapping@cbre.com); DMTISpatial, Environics Analytics, Microsoft Bing, Google Earth